

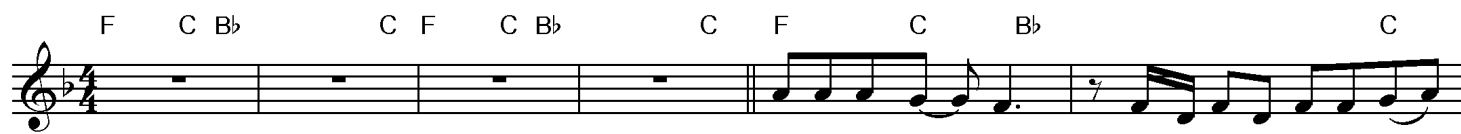
Who's That Pulling the Sleigh?!

(Based on the book "The Christmasaurus" by Tom Fletcher)

Jo Downs

INTRO

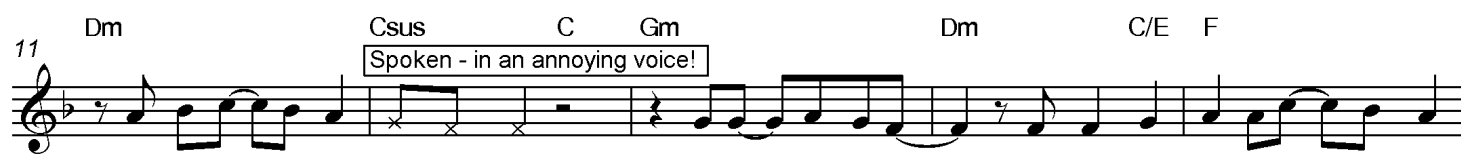
VERSE 1



Wil-li-am Trun - dle was an or - di - na - ry boy:..



his great-est pas-sion was di - no-saurs. Went to school in his wheel - chair and he tried to a-void



his arch e - ne-my "Bren-da Payne". He lived with his Dad___ and they both real-ly, REAL-LY loved



Christ-mas and he wrote to San - ta for a di-no saur each year.

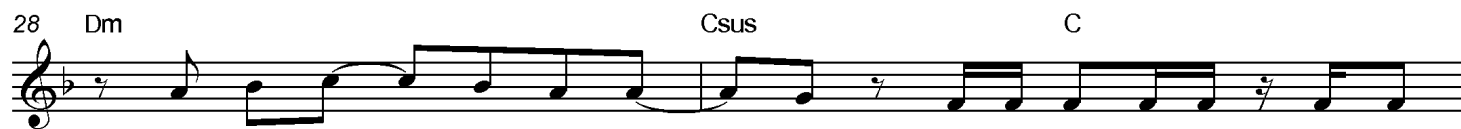
VERSE 2



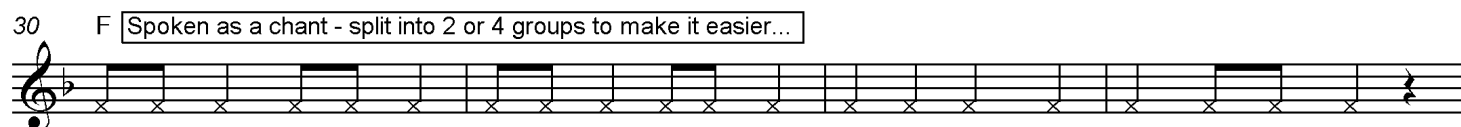
Mean-while in the North Pole, strange things were hap pen ing___ elves were dig - ging for pre



- sents in the fro-zen ground. When they dis-co - vered a big, e - nor-mous un-hatched egg___



took it back___ to show San - ta (by the way, the elves were called:



Snoz-zle-trump, Spec-kle-hump, Spar-kle hump, Su-gar-snout, Star lump, Spud-cheeks, Snow-crumb and Sprout!)



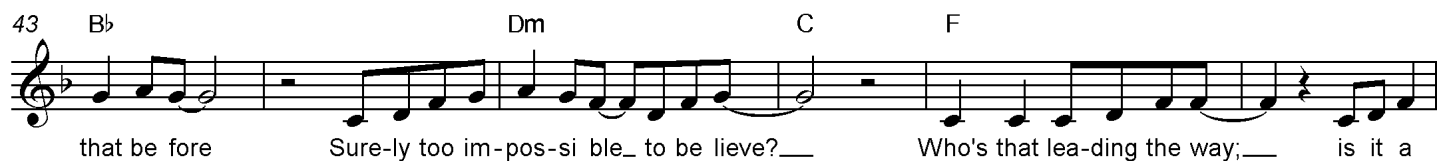
Who knew when they found___ it it would turn out to be a real life fly-ing di - no- saur?!

2 38 C F CHORUS C



And the peo-ple said: "Who's that pul-ling the sleigh;__ is it a di - no saur?! I've ne-ver seen

43 B \flat Dm C F



that be fore Sure-ly too im-pos-si ble_ to be lieve?__ Who's that lea-ding the way;__ is it a

49 C B \flat Dm



di - no saur?! with all it's feet off the floor fly-ing through the sky on Christ-mas Eve!

54 C B \flat C Dm Csus C B \flat C Dm



__ See it tra-vel soar- ing,_ roar - ing,_ di-no saur__ ing._ No-one will be-lieve my__ sto

60 Csus C F C B \flat C F C B \flat C



- ry__ in the mor - ning a-boutwhen I saw the Christ-ma saur - us!"

VERSE 3

67 F C B \flat C F C B \flat C



Christ-mas Eve all was qui - et in the Trun-dle house, down the chim-ney came San - ta.__

71 F C B \flat Dm Csus C



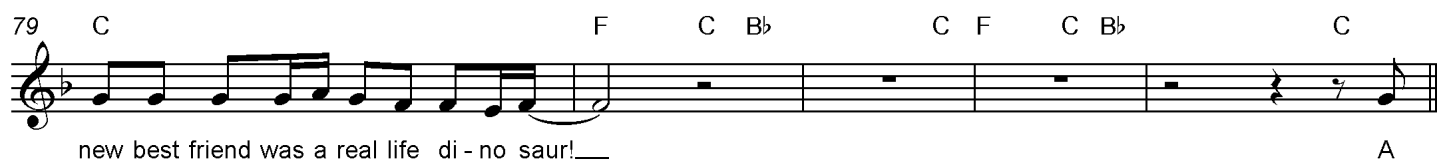
Left a toy__ di-no-saur at the end of Will-iam's bed, un-a ware that the real__ one had snuck in too!

75 Gm Dm C/E F Csus



Will-iam o-pened his eyes__ and could-n't be lieve__ the vi - sion be fore__ him:_ his

79 C F C B \flat C F C B \flat C



new best friend was a real life di - no saur!__ A

VERSE 4

84 F C B \flat C F C B \flat
 flight to the North Pole was their ve - ry first ad - ven - ture: Will - iam flew__ in his wheel

87 C F C B \flat
 - chair towed by Christ - mas lights. Then back home they were fol - lowed by an e - vil Hun - ter

90 Dm Csus C Gm Dm C/E F
 but de - fea - ted him side__ by side. For once in his life__ Wil - li - am felt__ on top__ of the world

95 Csus C F CHORUS C
 And the peo - ple said: "Who's that pul - ling the sleigh;__ is it a di - no saur?!"

100 B \flat Dm C
 I've ne - ver seen that be fore__ Sure - ly too im - pos - si - ble__ to be lieve?__

105 F C B \flat
 Who's that lea - ding the way;__ is it a di - no saur?! with all it's feet off the floor.

110 Dm C B \flat C Dm
 fly - ing through the sky on Christ - mas Eve!__ Watch it tra - vel soar - ing,__ roar - ing,__ di - no saur

115 Csus C B \flat C Dm Csus
 __ ing.__ No - one will be - lieve my__ sto - ry__ in the mor - ning__ a - bout

120 C F C B \flat C F C B \flat
 when I saw the Christ - ma saur - us!__ When I saw the Christ - ma saur - us!__

124 C F C B \flat C F C B \flat
 When I saw the Christ - ma saur - us!__ When I saw the Christ - ma saur - us!"__